

CyberRat: Admin User's Guide

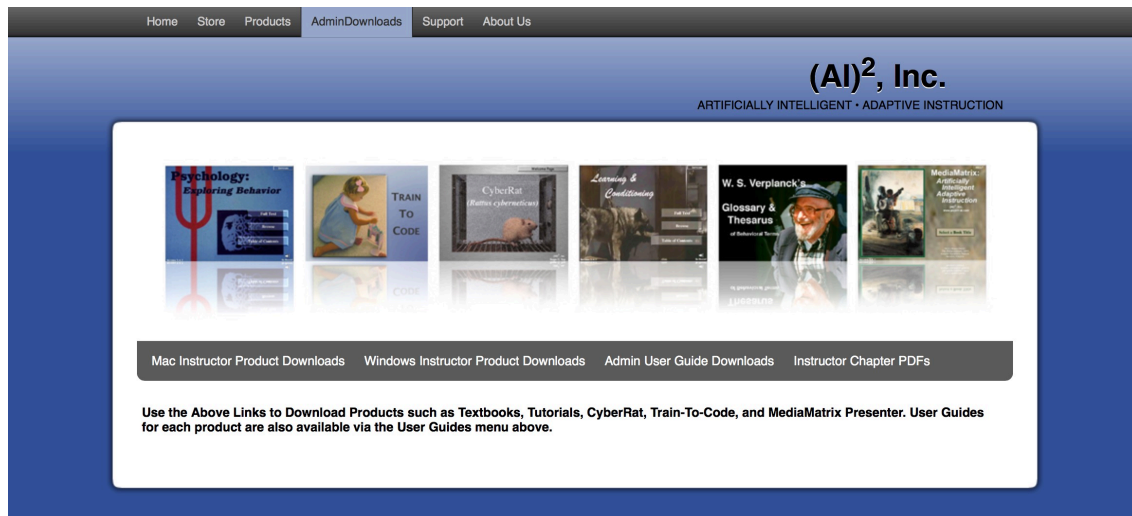


Roger D. Ray, Ph.D.
(AI)², Inc.
CyberRat
Admin User's Guide

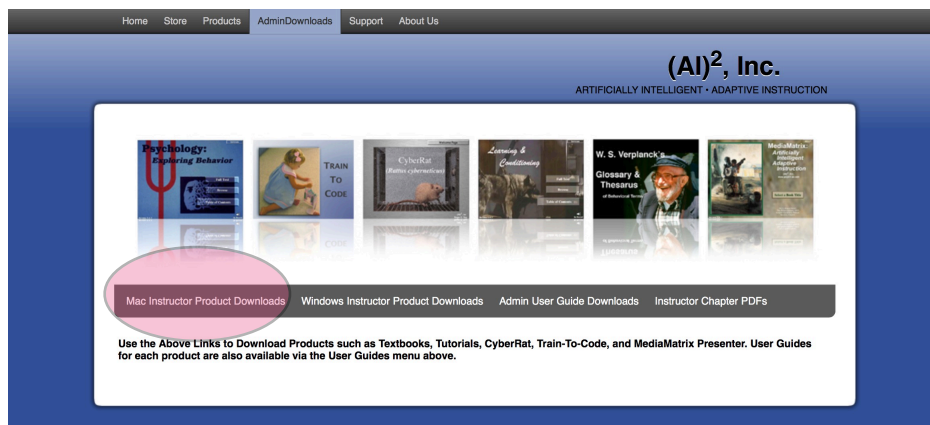
CyberRat is an internet enabled application which saves all student work on our own company servers. Each adopting instructor has records created in our instructors databases for each course and section being taught. Students register, and thereby create personal records in our student databases, for their appropriate school, instructor, course, and section when they register their proof-of-purchase serial numbers and their student ID with us. All of this allows us to give instructors a “back-door” application for accessing each and all of their respective sections for course administrative and student progress checking purposes. This application is also called CyberRat, but it includes both CyberRat (to be used as students use it) and the Course Administration System (allowing for course administration and assignment reviews). The following guide illustrates how to obtain and setup this tool, and how to use it.

Download Application:

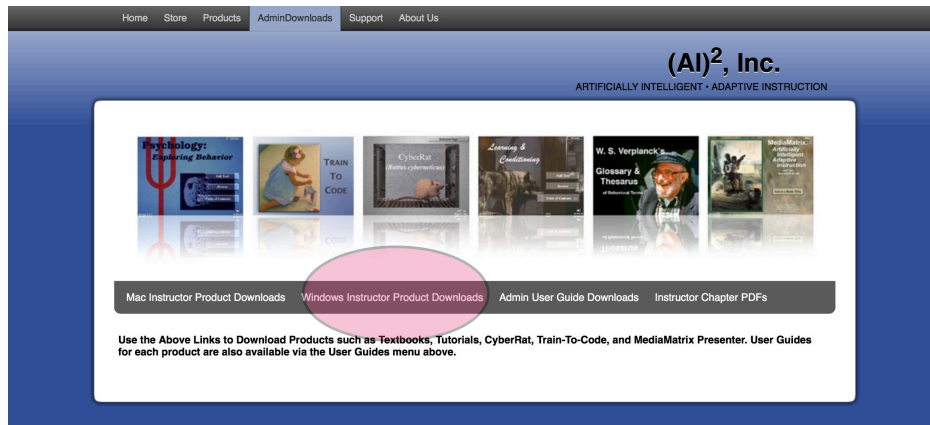
Only adopters and prospective adopters are given the URL address: (http://www.ai2inc.com/Instructors/AdminDownload_index.html) for downloading our Admin System, and it is distributed only via downloads from this site.



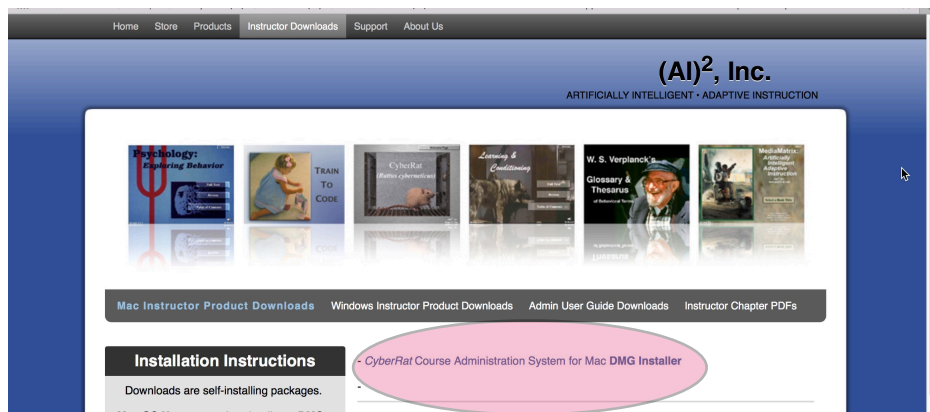
When you get to the Downloads main page, there are options to go to the **Mac Products** Downloads (seen below):



or the **Windows Downloads** Page (seen below):



After selecting the Product type that matches your computer's Operating System (Mac/Windows), you will see a list of product download options. Select to download CyberRat, as illustrated here:



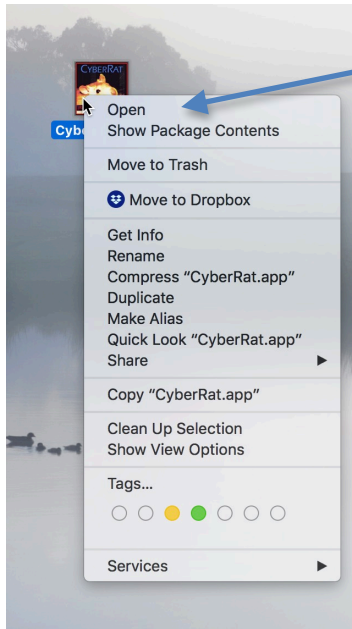
Downloads are self-installing packages.

Windows OS users are downloading an **.exe file** that installs a folder called **CyberRat** on your default installation drive (usually your :C drive). After installation, look for this folder called CyberRat and keep the CyberRat application in this folder for proper use.

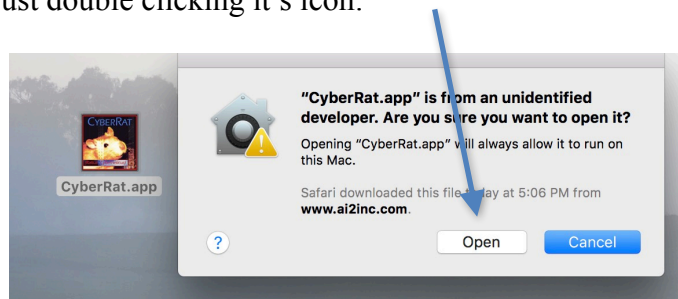
Mac OS-X users are downloading a **DMG image** that shows as a disk. The entire **CyberRat** folder must be copied from the DMG window onto your HD

Applications folder (you may place an alias on your doc if you wish) and the CyberRat application must remain inside this folder for proper use.

If you experience a problem on first Mac launch, This is the result of a MacOS security setting in your System preferences, but the way around it that has to be done only the first time you open it is as follows:



Hold Control key down while clicking on the CyberRat icon to show drop down menu. Choose “Open” from this menu (it’s the very first item). You will probably get warning or a “verification” message from Mac’s build in security (Gatekeeper) that CyberRat is from “unidentified developer”, but if you right clicked CyberRat icon (as described above) this dialog will have “**Open**” button. Click “open” button and it should open. You need to do it only once, After this first time you can open CyberRat by just double clicking it’s icon:



Launching the CyberRat + Admin Application

Upon launch, a login screen similar to that offered by CyberRat itself appears, except you now have to select a button after submitting your login ID. The options for applying this ID include “Login as Student” (which opens your student version of CyberRat) or “Login as Admin” (which takes you to the Course Administrative screen). There is also an option to “Quit CyberRat” if you wish to exit at this point. Logging in as a student requires a prior registration “as a student” using an activation code. **If you don’t have a student activation code, contact us at sales@ai2inc.com for a free code and registration instructions.**

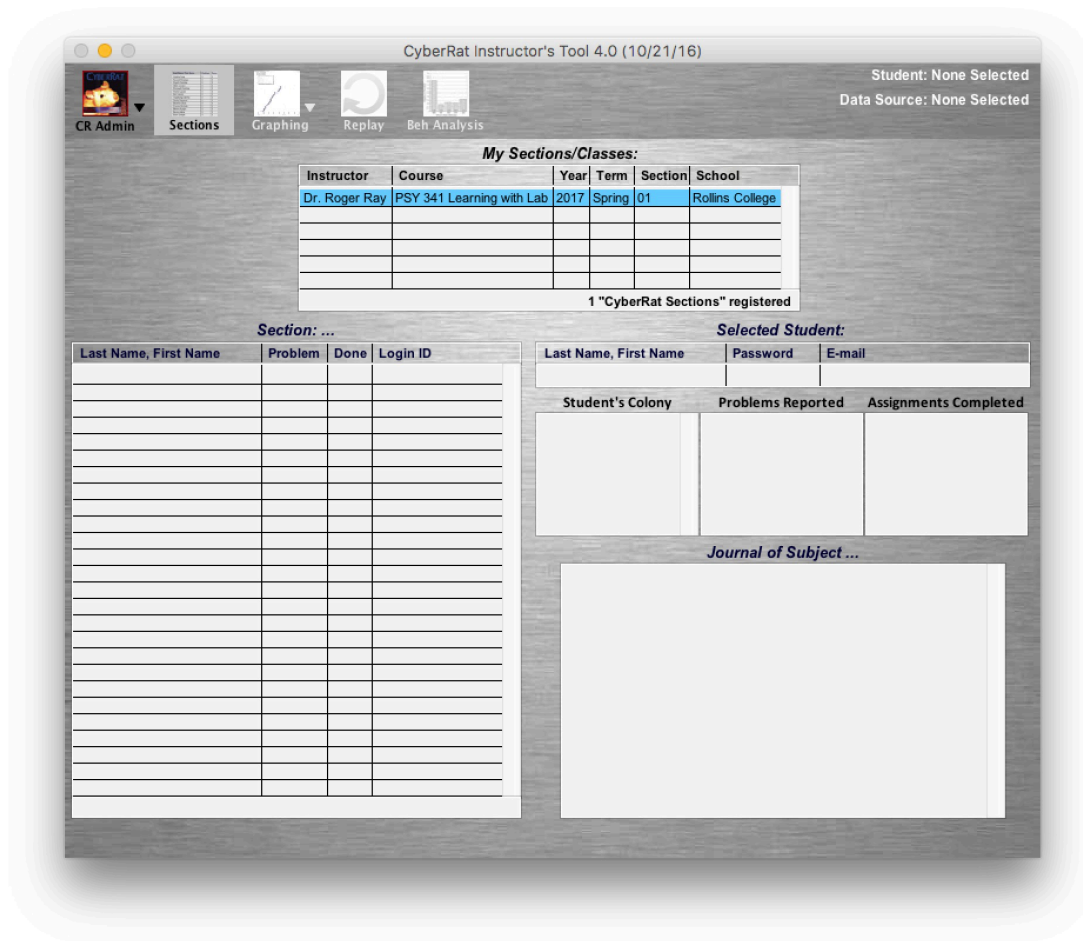
A NOTE FOR EVALUATORS: If you are an “Evaluation” user who is exploring the system for potential adoption, you may explore how the tool works for course and section management by using the login ID for the Evaluation College section. This ID is also our company phone number: 4072340045 and the “students” you will find in this single section are others who are also evaluating the system (so please be respectful of others by not posting personal messages to the server when you explore this



feature). If you object to having your name appear to others, we can alter your name in our records if you send us an e-mail request to do so.

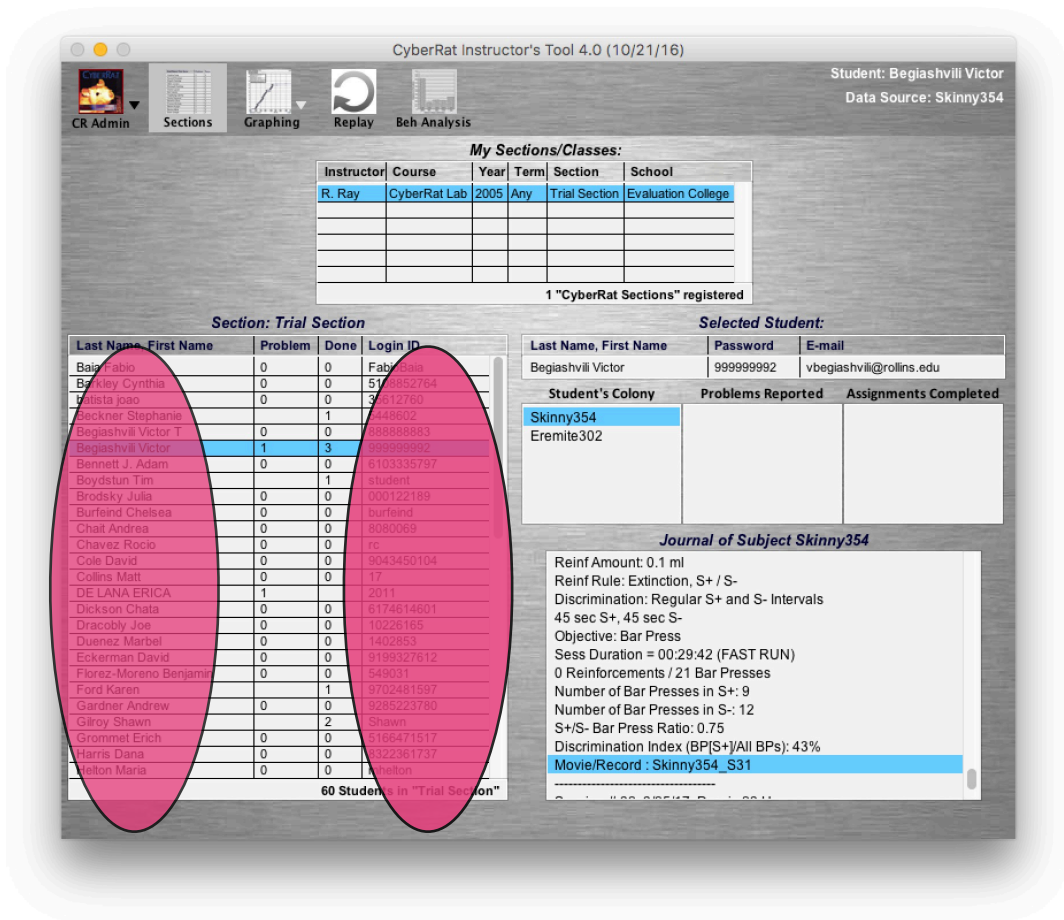
Course/Section Administration

Instructors should login using their ID given to us for course setups if they wish to access the course Administrative screen. Select the “Login as Admin” button, and as soon as the server recognizes you, you will see a screen listing all of your respective sections at the upper-center of your screen in a field labeled “My Sections/Classes,” as illustrated in the example below:



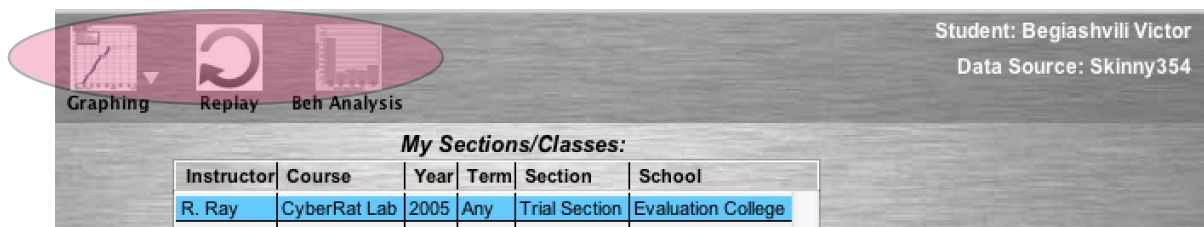
Clicking on any of the lines in this listing will “load” the class list for that section, thereby “populating” the “Section: (Name of Your Section Here)” field with a listing of all students registered for that section.

After the class listing for your desired section has been loaded, you will immediately see a summary for each student who has posted either (or both) a 1) Problem Report note, and/or an 2) Assignment Complete report. You may explore details for any given student, whether reports are posted or not, by clicking on the name of that student. This brings up personal information for the student, including Name, Password, and e-mail, as well as a complete listing of all animals currently assigned to that student’s colony. If any problems or assignment results have been noted for a given animal, that information will appear corresponding to the respective animal involved. Clicking on an animal’s name will then bring you a full Journal Listing for that subject animal, as illustrated above. This gives you the opportunity to a) merely scan all sessions by scrolling through the journal listing, b) jump from “Problem Report” to “Problem Report” or “Assignment Submissions” by using the “Journal Menu” popup that resides just below the journal window, as illustrated:



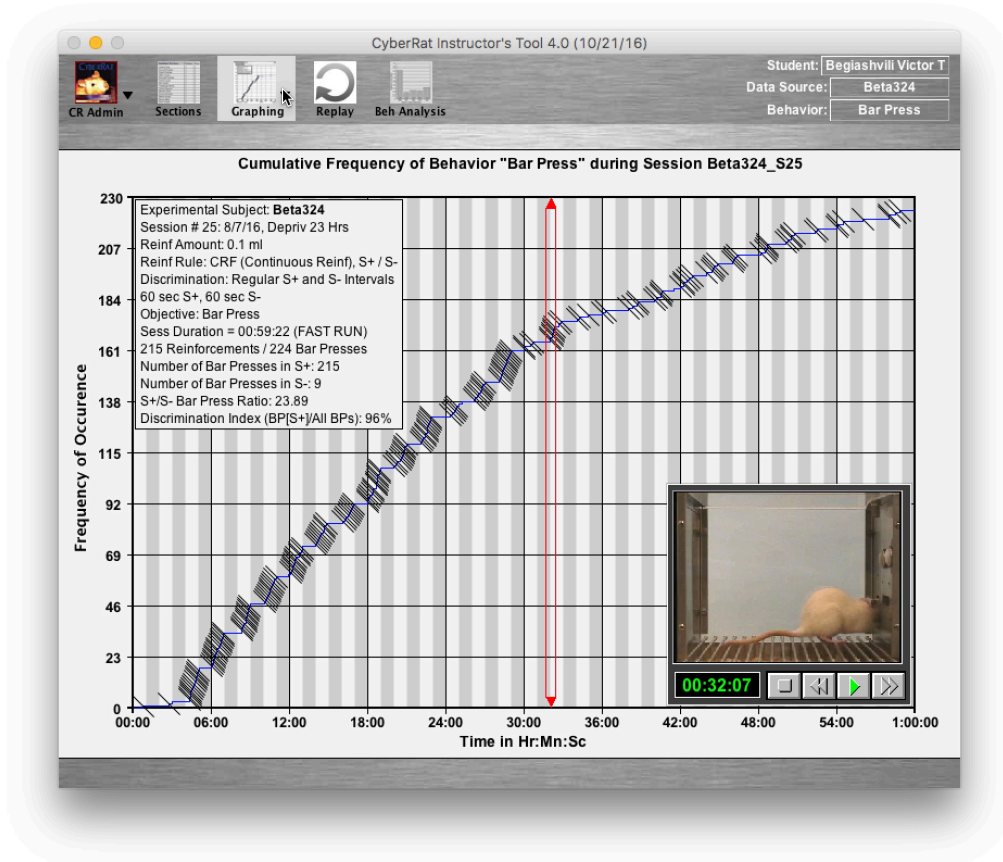
As you view each report, you may wish to respond back to that student with a personal message. We will discuss this possibility in a moment. In all likelihood, you will first want to view the problematic session being reported by the student. There are two ways of doing this, just as there are within CyberRat itself. One is by selecting the “Replay Session” option from the Navigation and services menu at the upper-right of each screen to replay only the video of the session. The other option is to view video playback superimposed upon the cumulative record of behavioral performance.

To view it graphically (with or without superimposed video), you may select any given session and choose the “Graphing Menu.” Other menu options are for viewing a



Full Screen Replay or seeing the Behavioral Analysis of multiple behaviors as in CyberRat itself.

The Graph Selected Session option will take you immediately to the Graph and Analyze screen and will graph that session, much like CyberRat does upon completion of a “Conduct Experiment” session via the graphics icon:



Of course, just as within the CyberRat application itself, you may also view a superimposed video playback of this session starting from any selected time segment you wish (see CyberRat’s User Manual for details on this and other graph-screen options, including printing the graph).

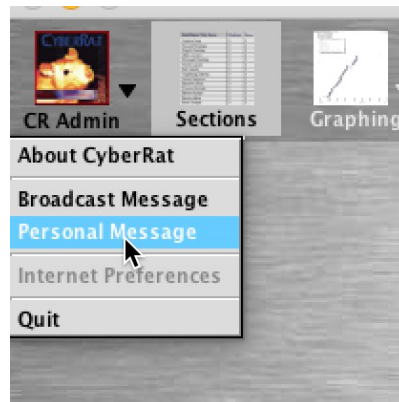
Alternatively, of course, you may move at any time to the Graph and Analyze screen via the pull-down menu at the upper-right of the screen. Once there, the active student’s Journal listing is available with any and all animals listed, just as if your were in CyberRat and were using the Graphing tools there. Likewise, once in the Graph and Analyze section, you may return to the Sections and Students section via the Sessions menu.

Reading and Posting Messages

For all versions of CyberRat following its public beta version there is an incorporated messaging system wherein an instructor may post:

- 1) Messages to the entire class, and/or
- 2) Personal Messages directed specifically to an individual student.

Thus, for example, an instructor may wish to reply to a posted “Problem Report” via the Personal Message system. Note from the illustration above that these two options are included on the main navigation and services menu at the upper-right corner of each screen after logins.



Selecting one of these options brings you a “composition” window where you can see any existing messages (Get Message For: menu) and/or type in a new one. Upon completion, use the “Send Message To:) option to post your message to the server. Upon launching CyberRat the next time, this student will see this message immediately after login. Similarly, any “broadcast” messages appear in ALL student’s CyberRat applications when they login for any reason.